

## SSoft Redox Benefits

- ◆ Chemical Free Scale Prevention
- ◆ Low Maintenance, No Salt bags,
- ◆ No Wastewater, completely self contained
- ◆ Retain beneficial minerals for health
- ◆ Improves efficiency of water using appliances
- ◆ Enhanced water for plants or gardens
- ◆ Enhance water for wastewater treatment systems
- ◆ Stainless Steel Pressure Vessel

## A Natural Water Solution

- ◆ Low maintenance
- ◆ No chemicals
- ◆ Small profile



[www.alternativewater.ca](http://www.alternativewater.ca)

45-100 Kalamalka Lake Road  
Vernon, BC V1T 9G1

Ph: 250-260-4499

Toll free: 877-260-4499

email: [alternativewater@shaw.ca](mailto:alternativewater@shaw.ca)



## SSoft Redox



The  
'Natural Choice'



# SSoft Redox - 5 stage treatment to solve multiple potable water issues

## SSoft Redox combines the latest Water Treatment technology.

A proven alternative, to Ion Exchange water softeners when combined with EMF conditioners such as Vulcan or Dreamwater.

### Stage #1: Redox media -

#### Removes chlorine, Iron, Sulfur, Manganese, and Heavy metals

- Transforms dissolved hardness minerals into solid micro-particles.
- Zinc/copper is an effective bacteria stat

### Stage #2: Scale Stop beads

- Polymer spheres which utilize Template Assisted Crystallization (TAC) which transforms dissolved  $\text{CaCO}_3$  to a crystalline form thus isolating hardness from the water chemistry and anything the water contacts
- **Extremely efficient**, Only 4 seconds contact time needed regardless of hardness level. Conventional softeners require 90 seconds

### Stage #3: 20" 1 micron Big Blue bag filter

### Stage #4: 20" Big Blue 1 micron filtration cartridge

### Stage #5: Electronic EMF scale and activation conditioner

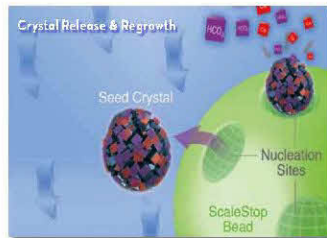
Choice of Calmat, Vulcan or Dreamwater

## Redox Media (specific zinc/copper)

- Redox is short for oxidation-reduction, which is a chemical reaction where electrons are transferred between molecules.
- This can precipitate oxidation or other chemical reactions. In some cases, such as free chlorine, this transfer results in the formation of benign substances, such as chloride
- copper, lead, mercury, and other heavy metals react to the media's surface effectively being removed from the water supply. **Redox media** effectively removes 98% - 99% of heavy metals
- **Redox media's** control microorganisms and biofilm
- reduces lime scale, iron & sulfur by changing dissolved mineral into filterable solid particles

## Scale Stop

- **Template Assisted Crystallization (TAC)** causes  $\text{CaCO}_3$  (hardness) to change into tiny hardness crystals that form on the bead surfaces. This form of hardness mineral does not stick to surfaces or create scale build up.
- TAC causes an increased release of carbonic acid which changes the equilibrium of the water chemistry to begin dissolving existing scale.



## EMF descaling and activation

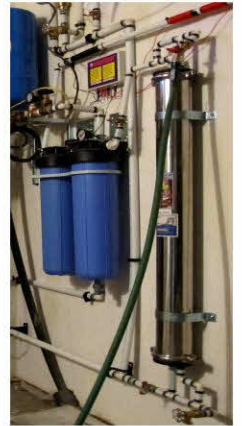
With effective EMF conditioners like the Vulcan or Dreamwater the effectiveness of both the Redox and Scale Stop is greatly enhanced and continues more effectively downstream. Each conditioner has independent advantages.

## The Calmat or Vulcan

A most economic choice—effective descaler

## Dreamwater

A very effective descaler and the most effective activation system today. In essence creating water with many similar properties as many natural “healing” waters.



## Applications

- Alternative to water softener,
- Dechlorination,
- Heavy Metal Removal, Iron, Manganese, Hydrogen Sulfide (rotten egg smell) removal & polisher, Scale Reduction. Can be adapted to big or small applications

## Foodservice

Coffee & tea brewers, Boiler based steamers Steam tables, Espresso Machines, Mist Cooling Systems

## Residential

Water Heater, Dishwasher, Laundry, Bath & Shower

## Commercial/Industrial

Car Washes, Evaporative Cooling, Hotels, Boilers

## Maintenance

Yearly maintenance to change filters and top up Redox media